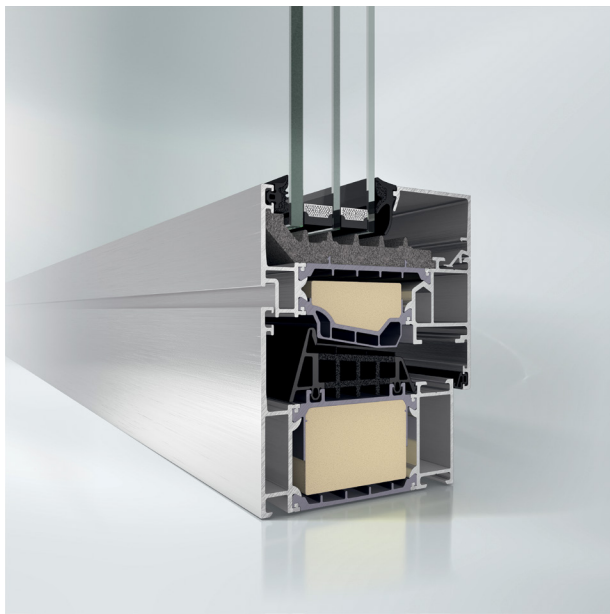

SCHÜCO AWS 90

ALUMINUM WINDOW SYSTEM



SCHÜCO

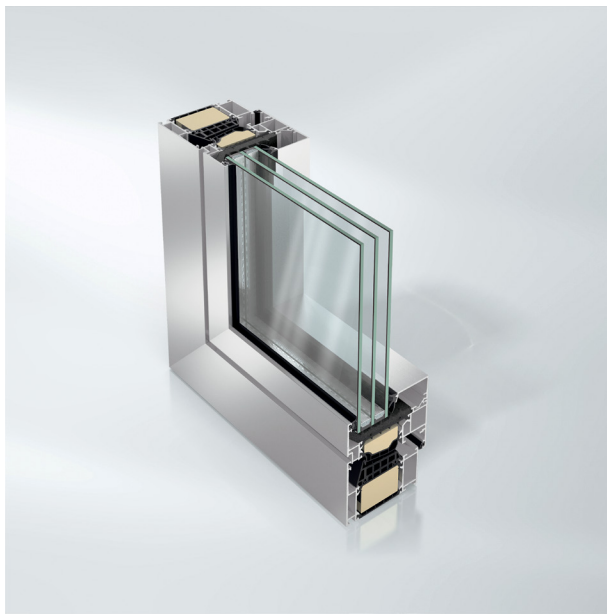
SCHÜCO AWS 90



Schüco Window System AWS 90.SI+

In the basic depth of 3-9/16" (90 mm), Schüco offers a comprehensive modular window system, including passive house certification. Its series Schüco AWS 90.SI+ and Schüco AWS 90.SI+ Green, which feature maximum thermal insulation, represent a perfect combination of structural requirements with the greatest possible degree of architectural design freedom.

Innovative, sustainable and future proof –significant proportions of renewable raw materials are also being used in insulating bars, foam and gaskets for the Schüco AWS.SI+ Green generation of windows, which is production ready. For example, castor oil, an ecological substitute for fossil fuels, is used in polyamide insulating bars.

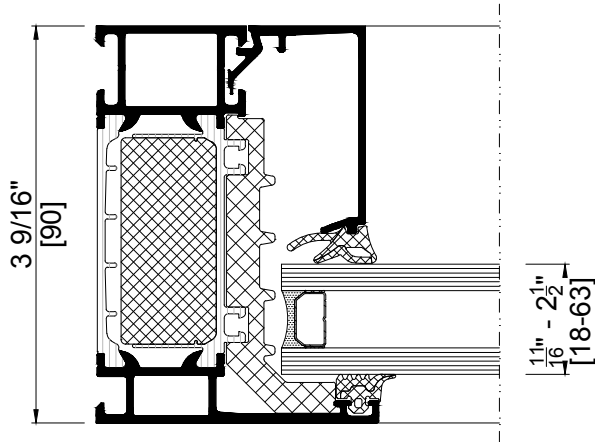


Schüco Window AWS 90.SI+ Green

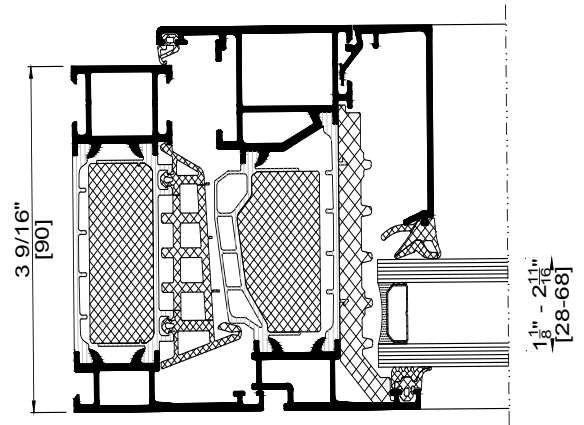
PRODUCT BENEFITS

- Schüco AWS 90.SI+ passive house certification due to improved thermal insulation
- Series variants with maximum thermal insulation to passive house standards available
- Easy-access opening





Horizontal section detail of Schüco Window System AWS 90.SI+ fixed window



Horizontal section detail of Schüco Window System AWS 90.SI+ tilt/turn window

TECHNICAL DATA	AWS 90.SI+ FIXED	AWS 90.SI+
Configurations	Fixed	Turn/tilt, Tilt/turn, side hung, inward casement, hopper window
Minimum Dimensions		18-1/2" x 21-1/4" (470 mm x 540 mm), 300 stay
Maximum Dimensions		66-15/16" x 82-11/16" (1700 mm x 2100 mm), 400 stay 39-3/8" x 98-7/16" (1000 mm x 2500 mm), 400 stay
Weight		Up to 353 lb (160 kg), 400 stay
Water Tightness	15 psf, 12 psf	15 psf
AAMA Rating	AW-PG 50, AW-PG 60	AW-PG 70
Hardware		Concealed, 180° opening possible
Accessories		Window restrictors, lockable handles, anti-slam fitting
Thermal Example*	0.15 Btu/hr-ft ² /-°F	0.17 Btu/hr-ft ² /-°F
	*Information based on NFRC standard test size with TGI wave spacer, IGU U-Value 0.29	*Information based on NFRC standard test size with TGI wave spacer, IGU U-Value 0.10

Are you planning a building project using Schüco systems or would like to in the future? **Contact us.**

Schüco develops and sells system solutions for windows, sliding doors and facades. In addition to innovative products for residential and commercial buildings, the building envelope specialist offers consultation and digital solutions for all phases of a building project – from the conceptual idea through final design onto fabrication and installation. Machinery for fabrication and a 360° cycle of sustainability complement the range of products and services.

With more than 5,400 employees worldwide, Schüco strives to be the industry leader in terms of technology and service today and in the future. To this end, the company is always developing and testing new products and services for the entire building envelope, taking into account current market trends and standards. 12,000 architects, investors, developer, fabricators and glazing contractors around the world work together with Schüco. The company is active in more than 80 countries and achieved a turnover of 1.88 billion USD in 2018.

Future Vision Windows & Doors

220 East 138th Street

Toronto, CA

Email: info@futurevisioncanada.com

www.futurevisioncanada.com

